



# ANNUAL REPORT 2022



**PREPARED BY:  
KYLE BORGER**



# A WORD FROM THE DIRECTOR

This was our 4th year of operations. A lot of our focus was to expand our agency to meet the demand of the counties we served. It seemed that no matter how many staff we hired there were always more people needing help.

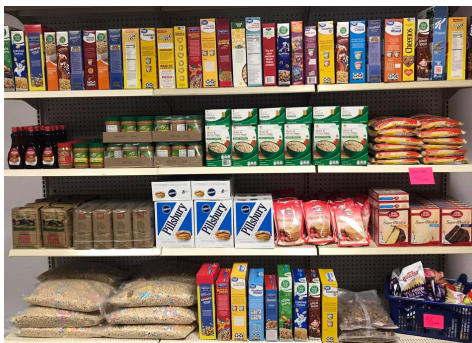
**KYLE BORGER**  
EXECUTIVE DIRECTOR



Grant to preschool



National Night Out



Pantry



Pantry



## FINANCIAL INFORMATION

### INCOME

Grants - \$671,800

Other contributions - \$2183,010

**Total Income - \$857,810**



## FINANCIAL INFORMATION

### EXPENSES

Grants and other assistance - \$168,201  
Salaries - \$638,970  
Professional Fees - \$20,144  
Advertising - \$13,394  
Office Expenses - \$37,606  
Occupancy (Office Rent) - \$22,969  
Travel - \$23,955  
Depreciation - \$3,414  
Insurance - \$2,603  
Training - \$34,374  
Misc. \$21,493  
Communication - \$10,845  
Food Purchase - \$8,606  
Other - \$16,838  
**Total Expenses - \$1,023,452**

#### Explanation of expenses

ERAP made a prepayment of \$255,000 the previous fiscal year which was carried over and used in this year.

There are high staff expenses due to hiring new staff and opening offices in 5 counties on behalf of ERAP. This includes the increased costs for training and travel.

While we do not show a lot of financial aid in comparison to staff costs, our contract was to assist with applications while the State of Wyoming disbursed the funds. Our staff actually helped to secure millions on behalf of our clients.

GOSHEN HELP



## OUTCOMES BY DOMAIN

INCLUDES SERVICES PROVIDED ON BEHALF OF COMMUNITY PARTNERS

<b>Housing</b>	<b># of Services</b>	<b>Value of Services</b>
ERAP Assistance	1,332	\$775,239
Home Repair	16	\$17,635
Mortgage Payments	4	\$4,670
Rent Payments	49	\$31,096
Utility Payments	119	\$25,777
Emergency Shelter	57	\$18,220
<b>Health</b>		
Emergency Food	8	\$1,872
Medical Payments	59	\$26,386
<b>Other</b>		
Transportation	56	\$22,891
<b>Total</b>	<b>1,703</b>	<b>\$927,463</b>

\*Our food pantry in Goshen County stopped collecting client data in an attempt to provide emergency food without the need for contact or close encounters.